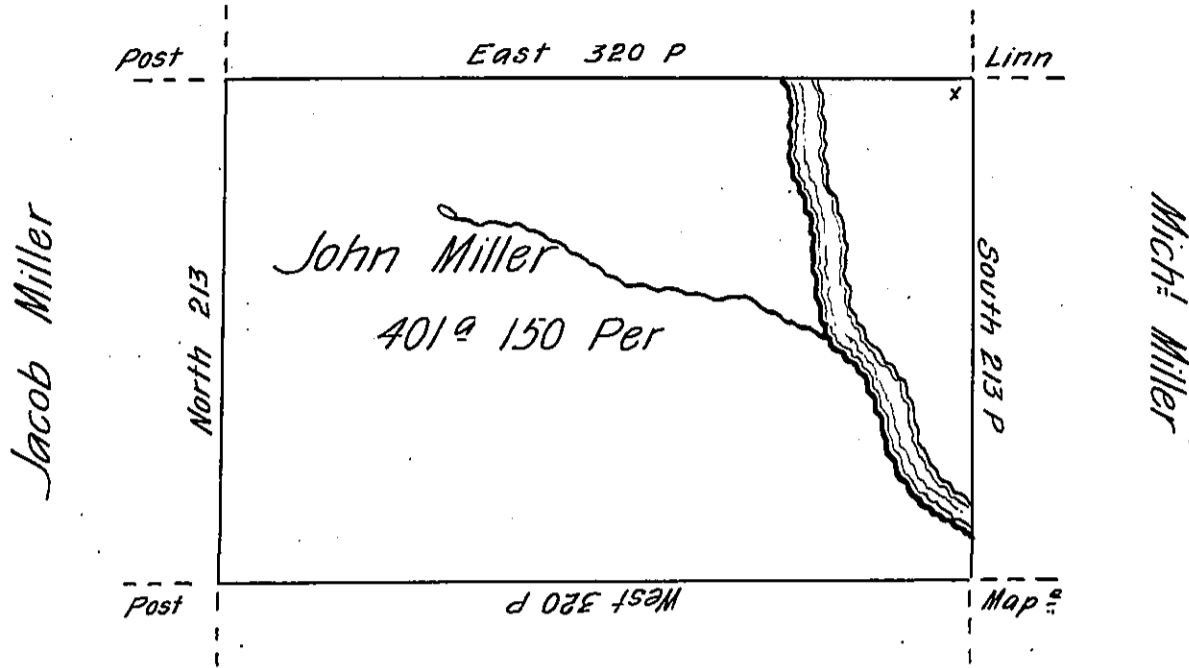


W^m Montgomery



Timothy Matlock

Situate on the West side of French Creek in Allegheny County
 Containing 401 acres and 150 P & allowance of Six Per Cent for Roads &c.
 Surveyed the 3^d day of June 1795. In pursuance of a Warrant dated
 the 30th day of May 1792.

W^m Power Dy. S^r

To Dan^l Brodhead Esq^r
 Surveyor General.

IN TESTIMONY that the above is a copy of the original remaining on file in
 the Department of Internal Affairs of Pennsylvania, made
 conformably to an Act of Assembly approved the 16th day of
 February, 1833, I have hereunto set my Hand and caused
 the Seal of said Department to be affixed at Harrisburg,
 this twenty first day of December 1905.

Geo. D. Brewer
 Secretary of Internal Affairs.